

GLOUCESTER COUNTY SURVEY MARK DATA SHEET

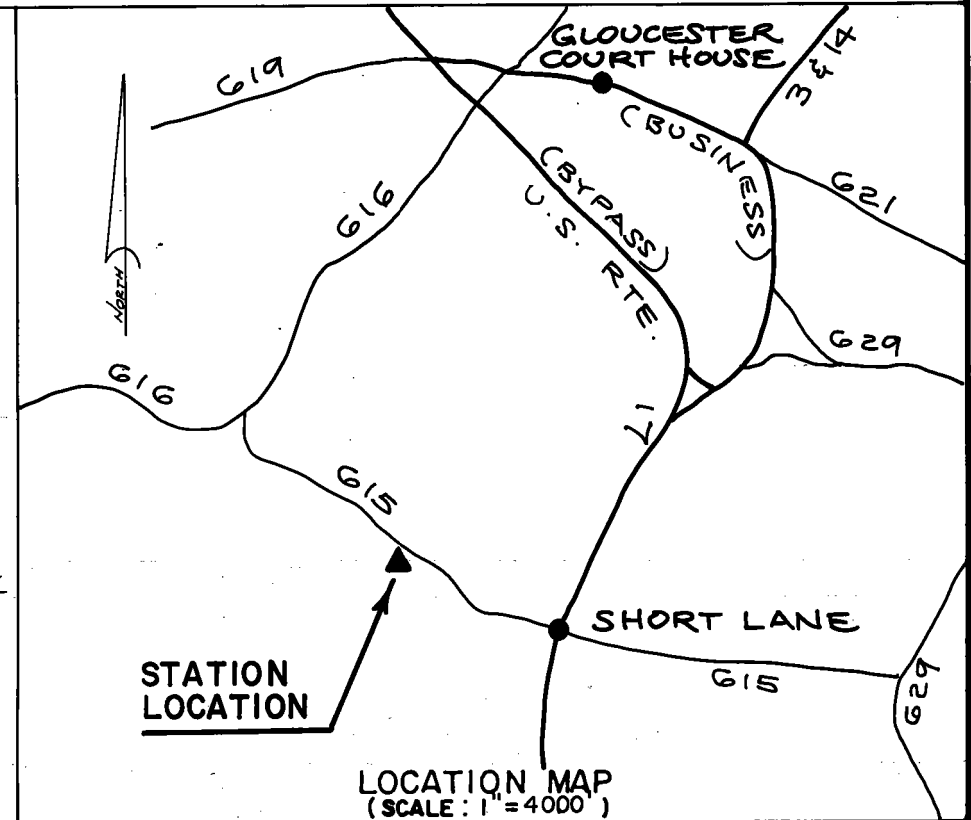
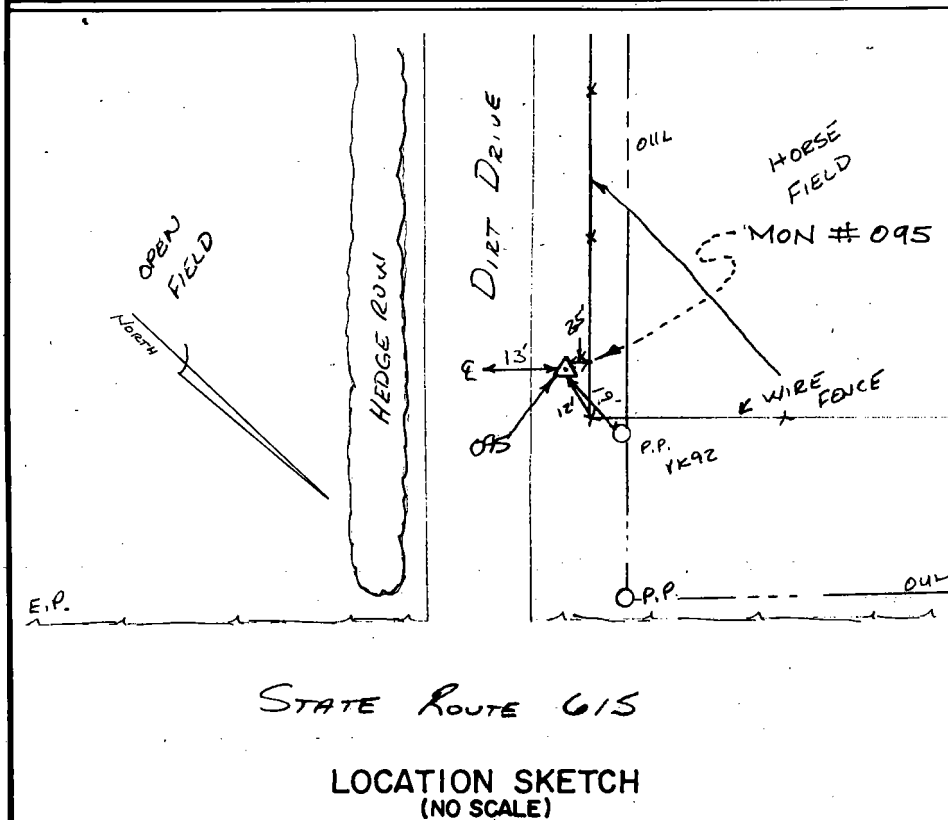
STATION NO.
095

HORIZONTAL DATA : VA. STATE PLANE COORD. - SOUTH ZONE (NAD 1983)		
UNITS	EASTING (X)	NORTHING (Y)
METERS	3673103.271	1118934.358
U.S. SURVEY FT.	12050839.648	3671037.140
LATITUDE (DMS)	37 23 20.05850	
LONGITUDE (DMS)	76 32 42.09957	
SCALE FACTOR	0.99994547	
CONVERGENCE \sphericalangle (DMS)	1 11 11.48	
VERTICAL DATA : REF. TO NATL. GEOD. VERT. DATUM (1988)		
UNITS	STATION ELEVATION	
METERS	22.15	
U.S. SURVEY FT.	72.67	

STATION DESCRIPTION :

DISTRICT : PETSORTH

A 3-1/4" ALUMINUM DISK MONUMENT SET APPROXIMATELY FLUSH WITH THE GROUND STAMPED STATION NO. 095. TO REACH: FROM THE INTERSECTION OF U. S. ROUTE 17 AND STATE ROUTE 615 AT SHORT LANE, GO ABOUT 0.65 MILE WEST ON STATE ROUTE 615 TO INTERSECTION WITH A DIRT ROAD; GO ABOUT 250' SW ON DIRT ROAD TO MONUMENT SITE.



DATE: JANUARY, 1992

NOTE: USERS OF MONUMENTS LOCATED ON PRIVATE PROPERTY
MUST OBTAIN LAND OWNERS PERMISSION BEFORE ENTERING



DAWSON & PHILLIPS, P.C.
CERTIFIED LAND SURVEYORS
(804) 693-2993