

GLOUCESTER COUNTY SURVEY MARK DATA SHEET

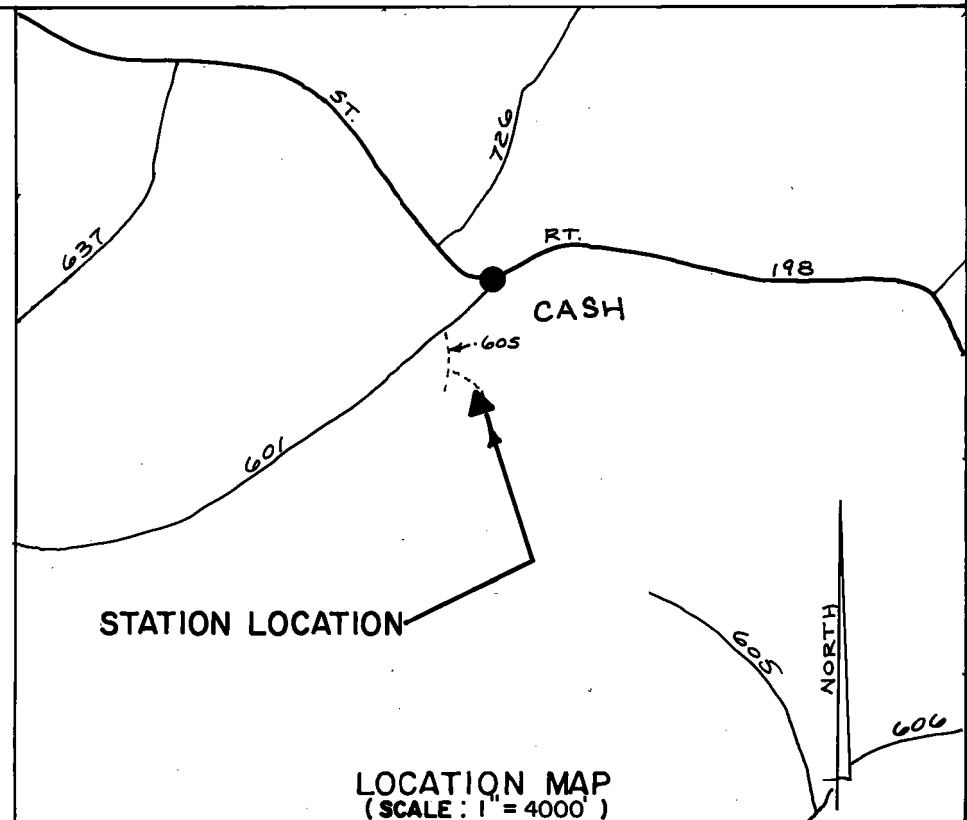
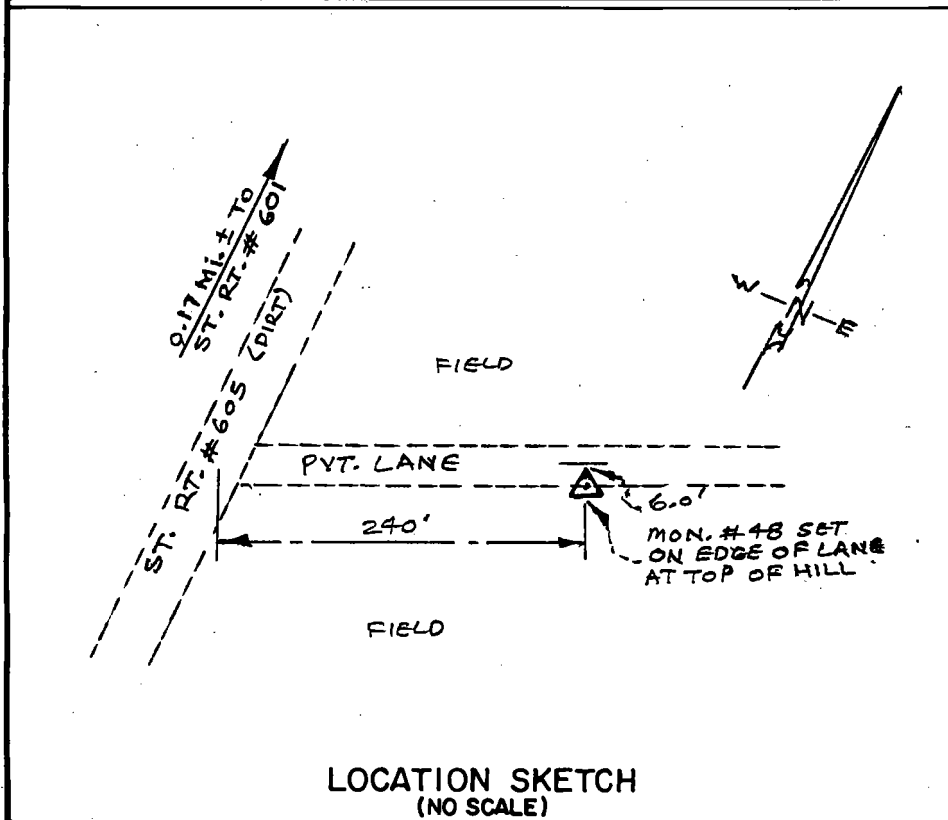
STATION NO.
048

HORIZONTAL DATA : VA. STATE PLANE COORD. - SOUTH ZONE (NAD 1983)		
UNITS	EASTING (X)	NORTHING (Y)
METERS	3672425.908	1134515.363
U.S. SURVEY FT.	12048617.333	3722155.820
LATITUDE (DMS)	37 31 45.82411	
LONGITUDE (DMS)	76 32 56.54165	
SCALE FACTOR	0.99994938	
CONVERGENCE \sphericalangle (DMS)	1 11 2.71	
VERTICAL DATA : REF. TO NATL. GEOD. VERT. DATUM (1988)		
UNITS	STATION ELEVATION	
METERS	22.04	
U.S. SURVEY FT.	72.32	

STATION DESCRIPTION :

DISTRICT : PETSORTH

A 3-1/4" ALUMINUM DISK MONUMENT SET APPROXIMATELY FLUSH WITH THE GROUND STAMPED STATION NO. 048. TO REACH: FROM THE INTERSECTION OF STATE ROUTE 198 AND STATE ROUTE 601 AT CASH, GO ABOUT 0.5 MILE SW ON STATE ROUTE 601 TO INTERSECTION OF STATE ROUTE 601 AND STATE ROUTE 605 (DIRT ROAD, NOT MARKED); CONTINUE ABOUT 0.2 MILE SE ON STATE ROUTE 605 TO MONUMENT SITE BETWEEN TWO FIELDS.



DATE: JANUARY, 1992

NOTE: USERS OF MONUMENTS LOCATED ON PRIVATE PROPERTY
MUST OBTAIN LAND OWNERS PERMISSION BEFORE ENTERING



DAWSON & PHILLIPS, P.C.
CERTIFIED LAND SURVEYORS
(804) 693-2993