

GLOUCESTER COUNTY SURVEY MARK DATA SHEET

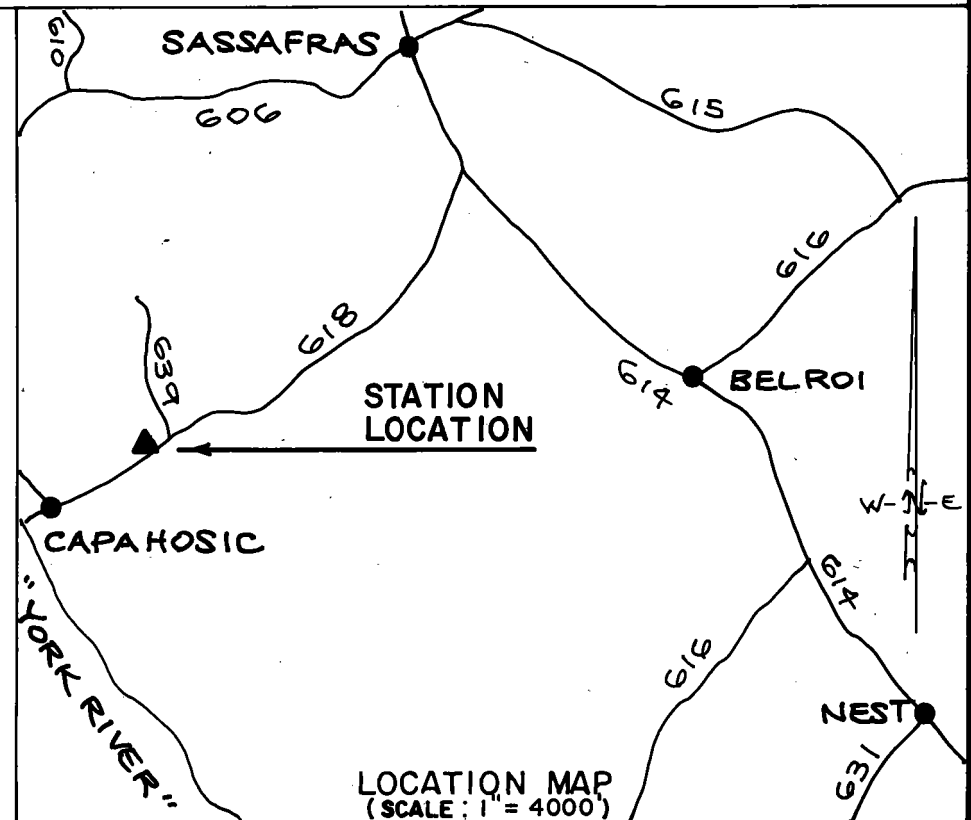
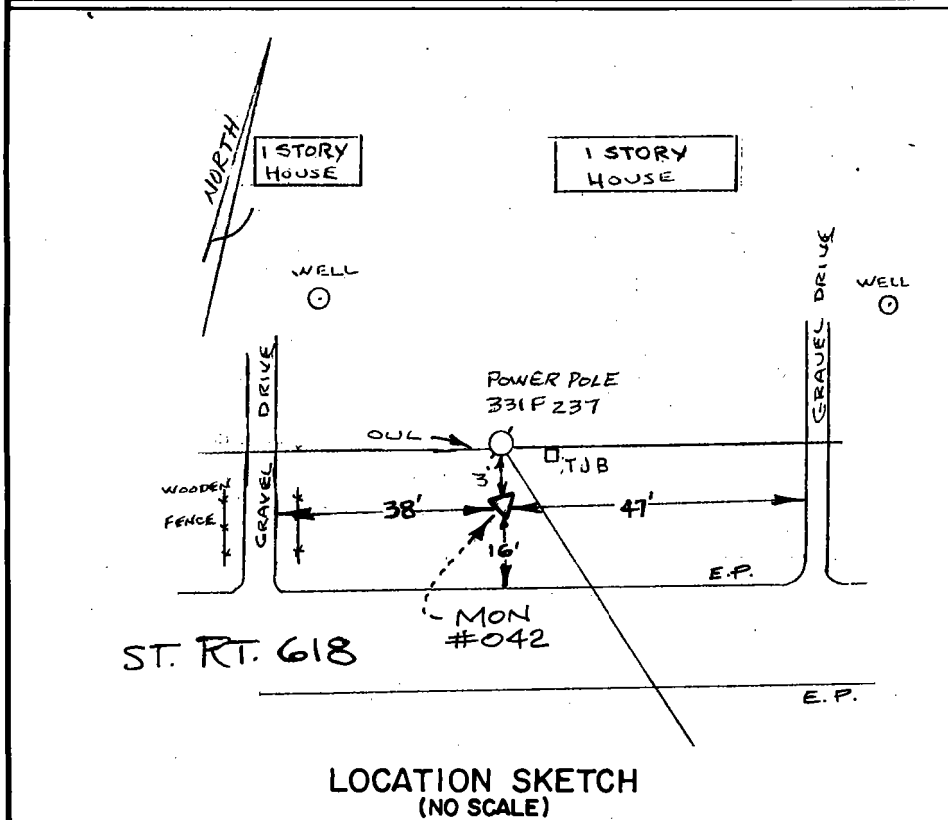
STATION NO.
042

HORIZONTAL DATA :		
VA. STATE PLANE COORD. - SOUTH ZONE (NAD 1983)		
UNITS	EASTING (X)	NORTHING (Y)
METERS	3665852.867	1118217.661
U.S. SURVEY FT.	12027052.281	3668685.776
LATITUDE (DMS)		37 23 1.58267
LONGITUDE (DMS)		76 37 37.37993
SCALE FACTOR		0.99994544
CONVERGENCE \sphericalangle (DMS)		1 8 12.26
VERTICAL DATA :		
REF. TO NATL. GEOD. VERT. DATUM (1988)		
UNITS	STATION ELEVATION	
METERS	9.32	
U.S. SURVEY FT.	30.58	

STATION DESCRIPTION :

DISTRICT : PETSORTH

A 3-1/4" ALUMINUM DISK MONUMENT SET APPROXIMATELY FLUSH WITH THE GROUND STAMPED STATION NO. 042. TO REACH: FROM THE INTERSECTION OF STATE ROUTE 606 AND STATE ROUTE 614 AT SASSAFRAS; GO ABOUT 0.5 MILE SOUTHEAST ON STATE ROUTE 614 TO INTERSECTION WITH STATE ROUTE 618; GO ABOUT 1.8 MILES SOUTHWEST ON STATE ROUTE 618 TO MONUMENT SITE ON NORTH SIDE OF STATE ROUTE 618.



DATE: JANUARY, 1992

NOTE: USERS OF MONUMENTS LOCATED ON PRIVATE PROPERTY
MUST OBTAIN LAND OWNERS PERMISSION BEFORE ENTERING



DAWSON & PHILLIPS, P.C.
CERTIFIED LAND SURVEYORS
(804) 693-2993