

GLOUCESTER COUNTY SURVEY MARK DATA SHEET

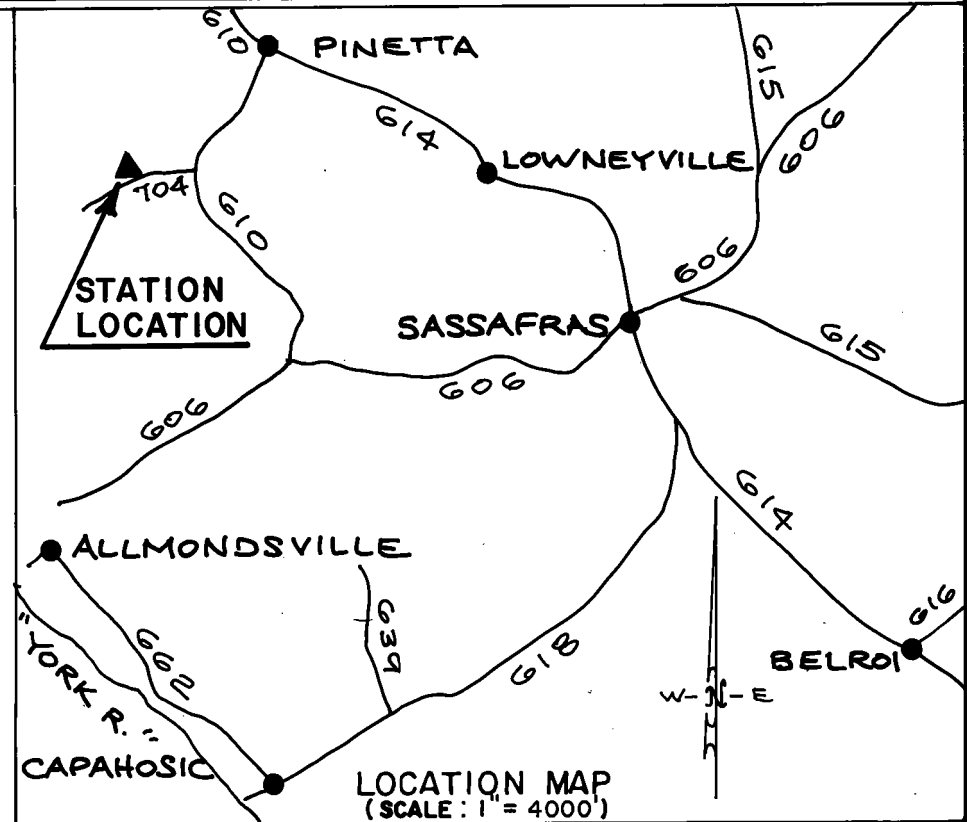
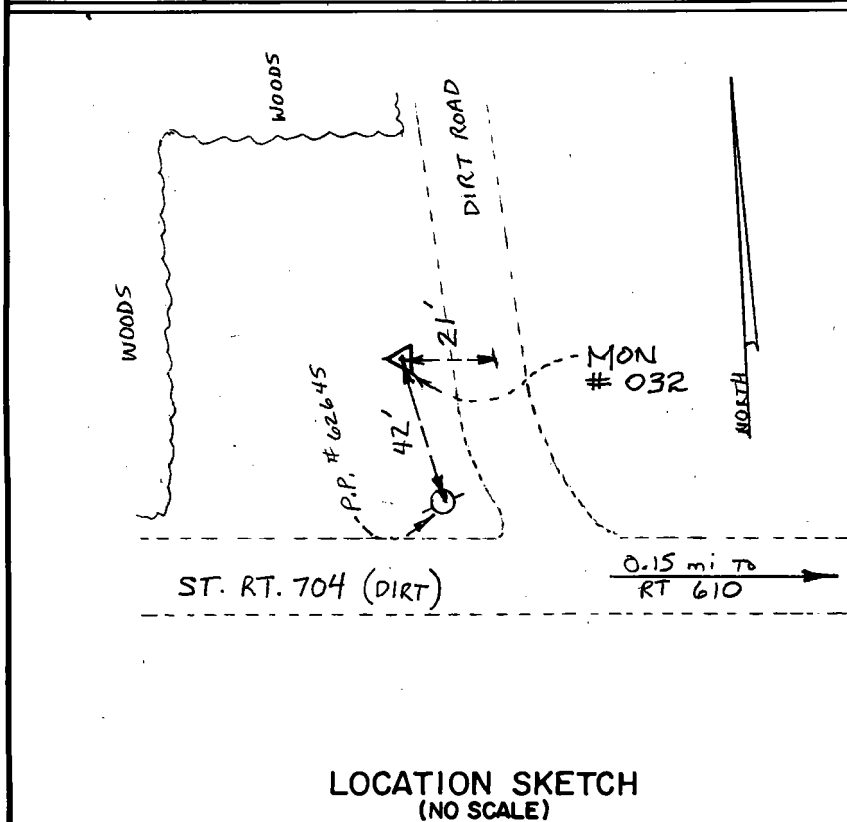
STATION NO.
032

| HORIZONTAL DATA : | | |
|--|-------------------|--------------|
| VA. STATE PLANE COORD. - SOUTH ZONE (NAD 1983) | | |
| UNITS | EASTING (X) | NORTHING (Y) |
| METERS | 3664511.013 | 1121725.696 |
| U.S. SURVEY FT. | 12022649.882 | 3680195.054 |
| LATITUDE (DMS) | 37 24 56.21619 | |
| LONGITUDE (DMS) | 76 38 29.11042 | |
| SCALE FACTOR | 0.99994575 | |
| CONVERGENCE \sphericalangle (DMS) | 1 7 40.87 | |
| VERTICAL DATA : | | |
| REF. TO NATL. GEOD. VERT. DATUM (1988) | | |
| UNITS | STATION ELEVATION | |
| METERS | 11.11 | |
| U.S. SURVEY FT. | 36.44 | |

STATION DESCRIPTION :

DISTRICT : PETSWORTH

A 3-1/4" ALUMINUM DISK MONUMENT SET APPROXIMATELY FLUSH WITH THE GROUND STAMPED STATION NO. 032. TO REACH: FROM THE INTERSECTION OF STATE ROUTE 610 AND STATE ROUTE 614 AT PINETTA, GO ABOUT 0.6 MILE SOUTHWEST ON STATE ROUTE 610 TO INTERSECTION WITH STATE ROUTE 704; GO ABOUT 0.15 MILE WEST ON STATE ROUTE 704 TO MONUMENT SITE ON NORTH SIDE OF STATE ROUTE 704.



DATE: JANUARY, 1992

NOTE: USERS OF MONUMENTS LOCATED ON PRIVATE PROPERTY
MUST OBTAIN LAND OWNERS PERMISSION BEFORE ENTERING



DAWSON & PHILLIPS, P.C.
CERTIFIED LAND SURVEYORS
(804) 693-2993