

GLOUCESTER COUNTY SURVEY MARK DATA SHEET

STATION NO.

004

HORIZONTAL DATA :

VA. STATE PLANE COORD. - SOUTH ZONE (NAD 1983)

UNITS	EASTING (X)	NORTHING (Y)
METERS	3662593.990	1139285.181
U.S. SURVEY FT.	12016360.449	3737804.798
LATITUDE (DMS)	37 34 26.91852	
LONGITUDE (DMS)	76 39 33.13453	
SCALE FACTOR	0.99995188	
CONVERGENCE \sphericalangle (DMS)	1 7 2.01	

STATION DESCRIPTION :

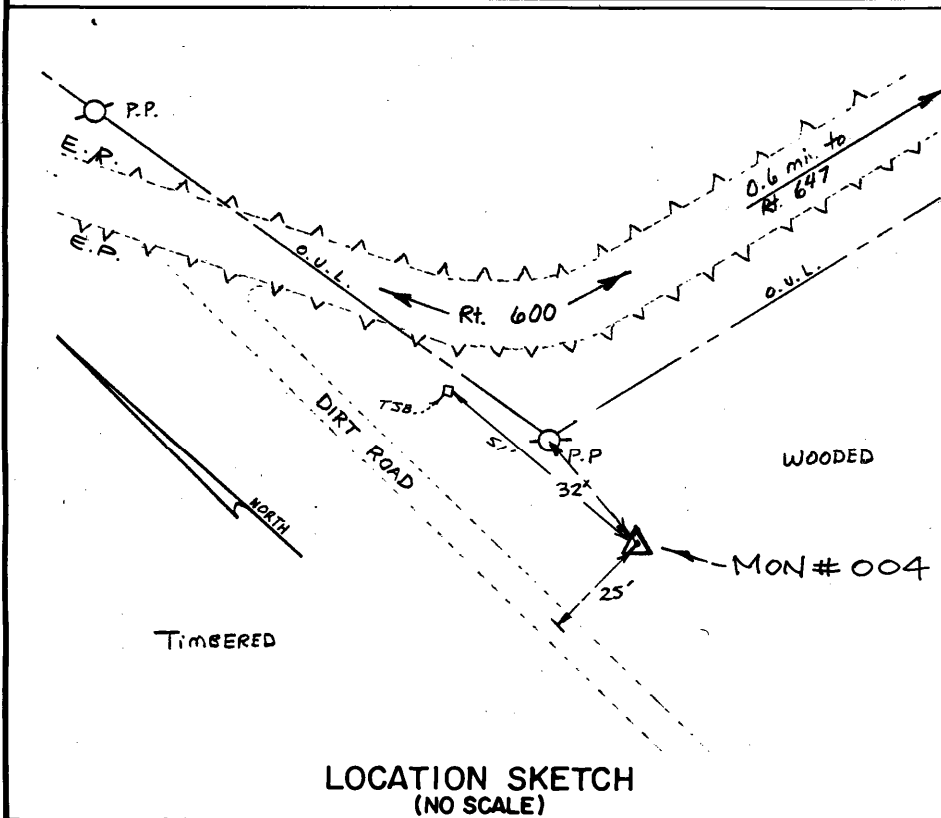
DISTRICT : PETSWORTH

A 3-1/4" ALUMINUM DISK MONUMENT SET APPROXIMATELY FLUSH WITH THE GROUND STAMPED STATION NO. 004. TO REACH: FROM THE INTERSECTION OF STATE ROUTE 647 AND STATE ROUTE 600 AT BATT, GO ABOUT 0.7 MILE NORTHWEST ON STATE ROUTE 600 TO MONUMENT SITE ON SOUTH SIDE OF STATE ROUTE 600.

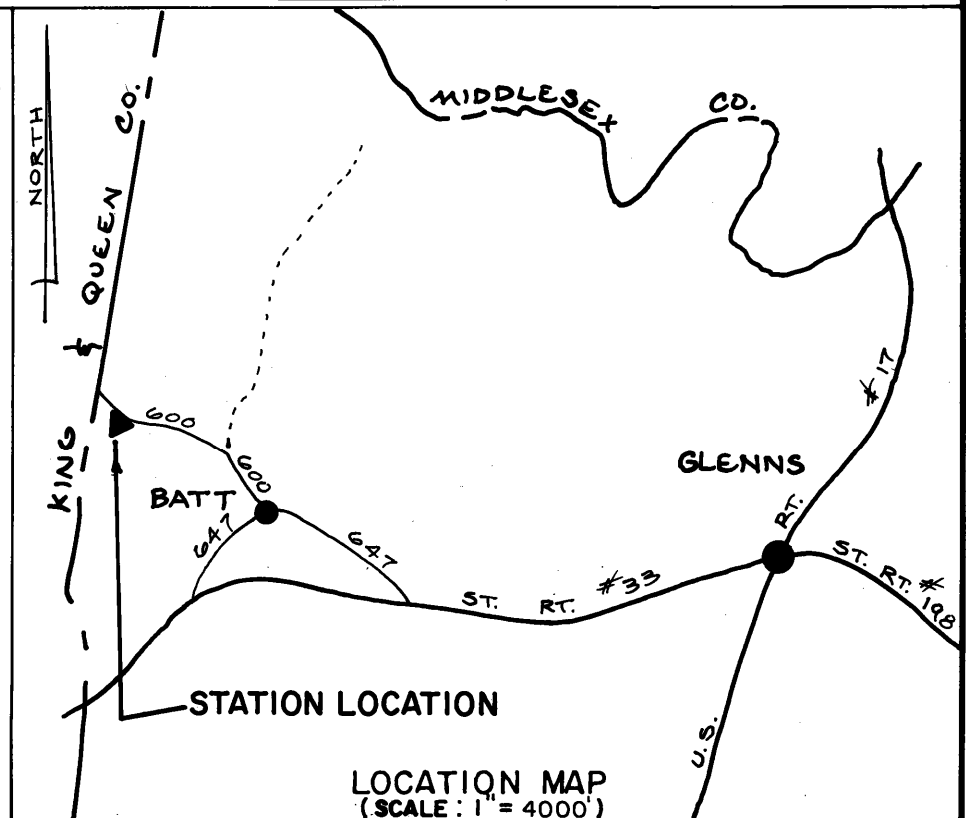
VERTICAL DATA :

REF. TO NATL. GEOD. VERT. DATUM (1988)

UNITS	STATION ELEVATION
METERS	33.69
U.S. SURVEY FT.	110.52



LOCATION SKETCH
(NO SCALE)



LOCATION MAP
(SCALE: 1" = 4000')

DATE: JANUARY, 1992

NOTE: USERS OF MONUMENTS LOCATED ON PRIVATE PROPERTY
MUST OBTAIN LAND OWNERS PERMISSION BEFORE ENTERING



DAWSON & PHILLIPS, P.C.

CERTIFIED LAND SURVEYORS
(804) 693-2993