

GLOUCESTER COUNTY SURVEY MARK DATA SHEET

STATION NO.

001

HORIZONTAL DATA :

VA. STATE PLANE COORD. - SOUTH ZONE (NAD 1983)

UNITS	EASTING (X)	NORTHING (Y)
METERS	3663022.392	1142148.809
U.S. SURVEY FT.	12017765.964	3747199.884
LATITUDE (DMS)		37 35 59.5173
LONGITUDE (DMS)		76 39 13.39624
SCALE FACTOR		0.99995360
CONVERGENCE \sphericalangle (DMS)		1 7 13.99

STATION DESCRIPTION :

DISTRICT :

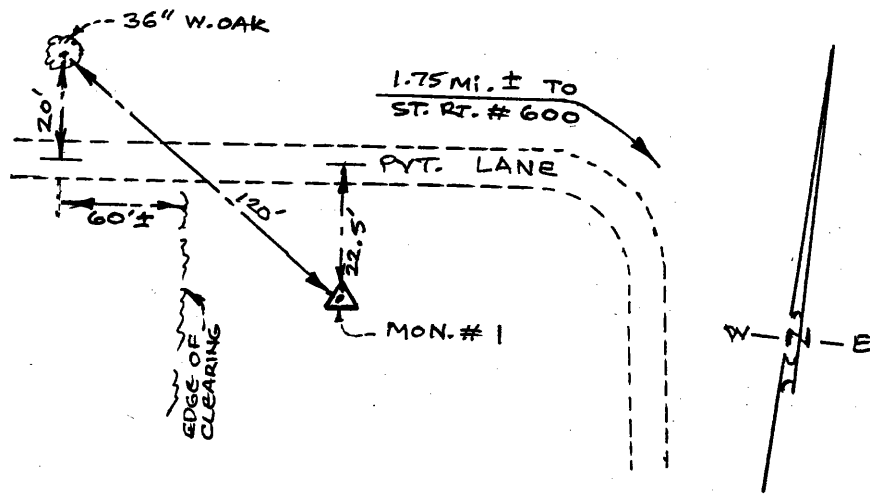
PETSWORTH

A 3-1/4" ALUMINUM DISK MONUMENT SET APPROXIMATELY FLUSH WITH THE GROUND STAMPED STATION NO. 001. TO REACH: FROM THE INTERSECTION OF STATE ROUTE 647 AND STATE ROUTE 600 AT BATT, GO ABOUT 1.1 MILES NORTHWEST ON STATE ROUTE 600 TO END OF STATE MAINTENANCE AT FORK IN ROAD; PROCEED RIGHT ABOUT 0.50 MILE NORTHEAST ON DIRT LANE TO FORK IN ROAD; GO LEFT ABOUT 0.20 MILE NORTHEAST TO FORK IN ROAD; PROCEED NORTHEAST ON RIGHT FORK ABOUT 0.41 MILE TO ANOTHER FORK IN ROAD; PROCEED NORTHEAST ON RIGHT FORK ABOUT 0.49 MILE TO INTERSECTION WITH DIRT LANE; GO ABOUT 0.15 MILE EAST AND THEN NORTHEAST ON DIRT LANE TO MONUMENT SITE ON SOUTH SIDE OF DIRT LANE.

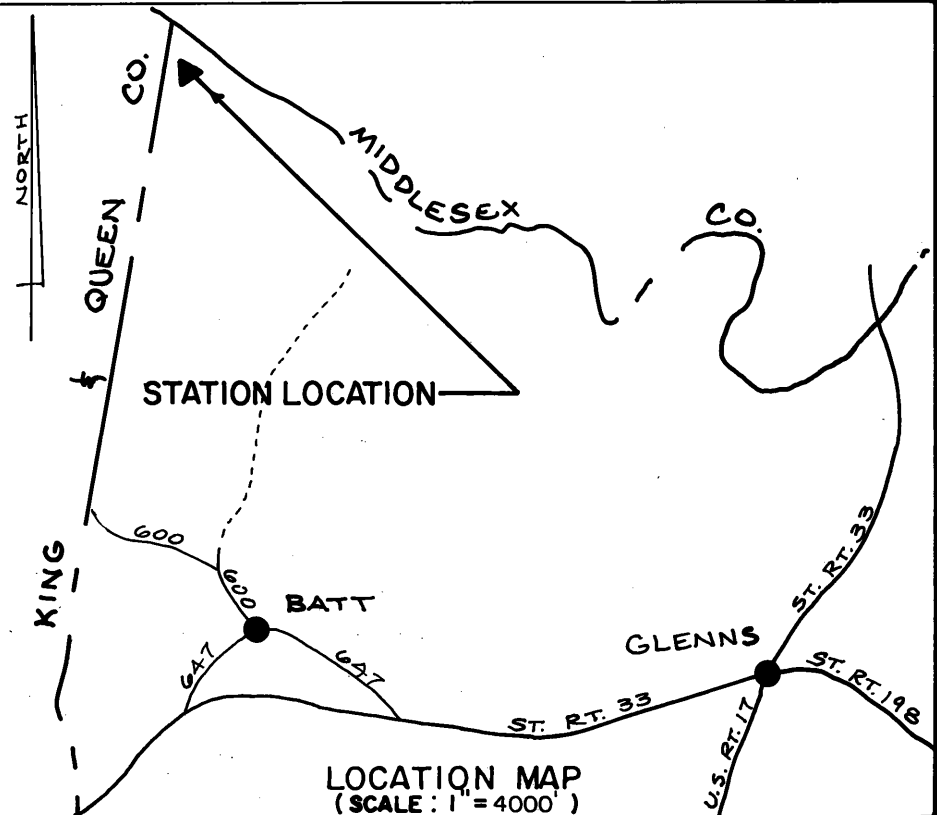
VERTICAL DATA :

REF. TO NATL. GEOD. VERT. DATUM (1988)

UNITS	STATION ELEVATION
METERS	9.27
U.S. SURVEY FT.	30.40



LOCATION SKETCH
(NO SCALE)



LOCATION MAP
(SCALE: 1" = 4000')

DATE: JANUARY, 1992

NOTE: USERS OF MONUMENTS LOCATED ON PRIVATE PROPERTY MUST OBTAIN LAND OWNERS PERMISSION BEFORE ENTERING



Dawson & Phillips, P.C.

CERTIFIED LAND SURVEYORS
(804) 693-2993